



BLOOMINGTON, IN THE HOOSIER LIFE SURVEY METROPOLITAN REPORT

What do Bloomington residents think about climate change, how are they preparing, and what resilience policies do they support? Results from the Hoosier Life Survey provide answers.

BELIEFS

75%
believe climate change is happening.

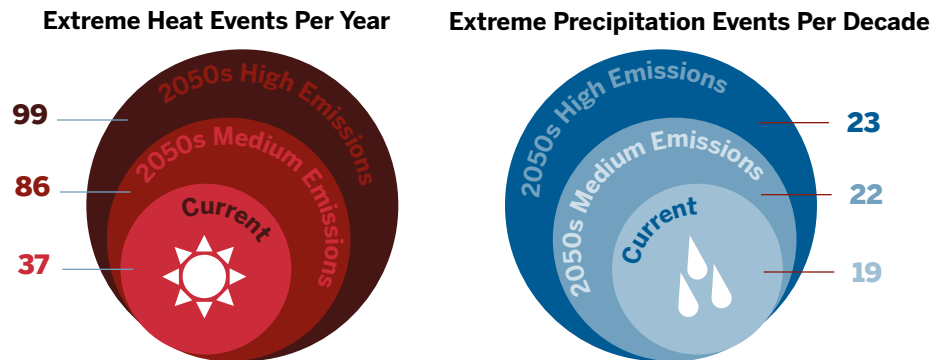
45%
believe climate change is entirely or mostly caused by human activities.

17%
don't know if climate change is happening.

65%
believe most scientists think climate change is happening.

FUTURE IMPACTS

Climate change is projected to bring more high heat days, more extreme precipitation events, and increased flood risks to the Bloomington metro area.



Source: Hoosier Resilience Index

INFORMATION, TRUST, AND EXPERIENCE

Fifty-two percent know someone who has suffered health impacts, such as dehydration or heat stroke, from heat waves or have experienced it themselves.



Forty percent trust Indiana scientists "a lot" about how to prepare for climate change.



Thirty-one percent feel very informed about the risks of extreme weather.

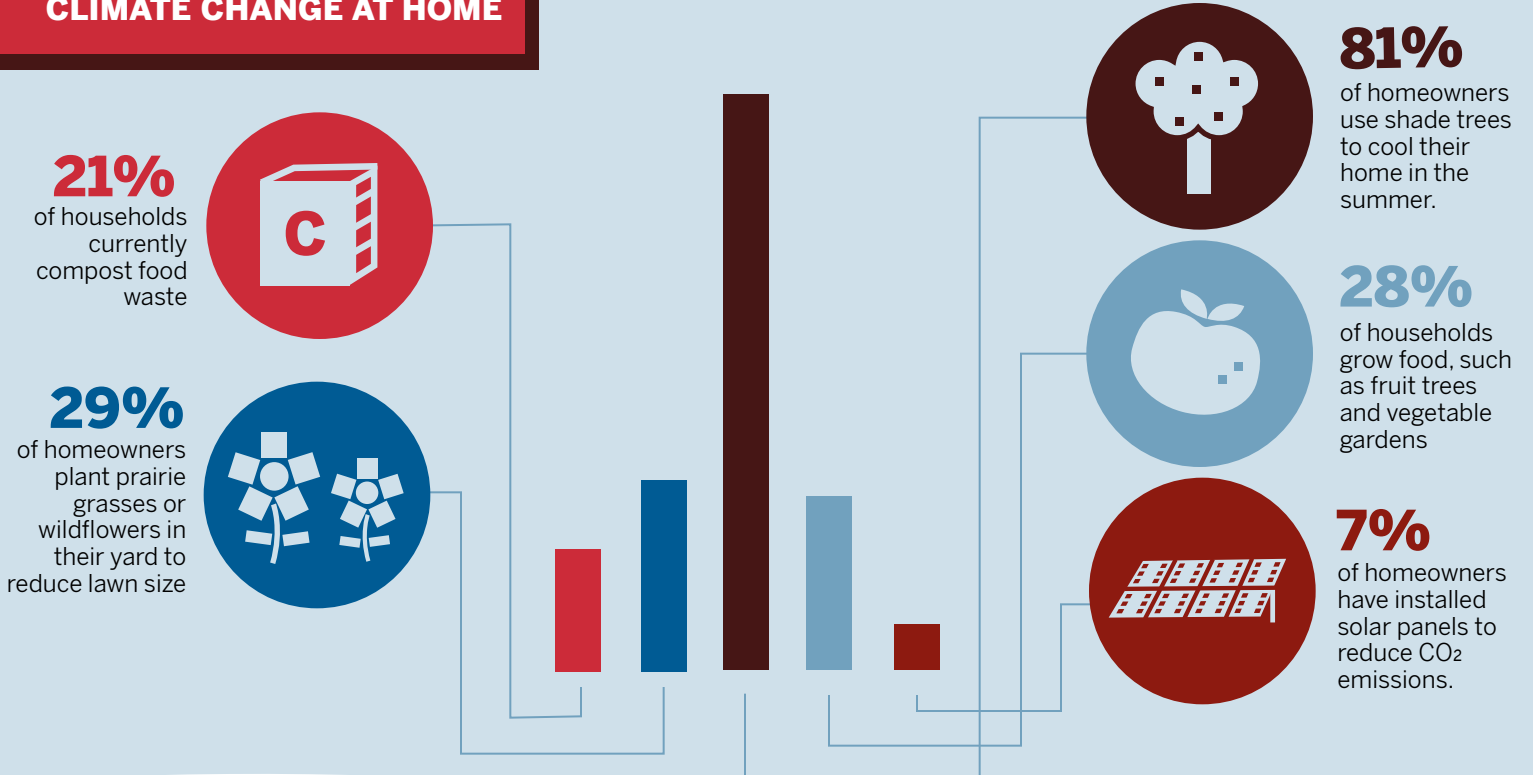


Survey statistics

Average Margin of Error: 9.3 percentage points
Confidence level: 95 percent

THE HOOSIER LIFE SURVEY METROPOLITAN REPORT

CLIMATE CHANGE AT HOME



COMMUNITY POLICIES AND PROGRAMS

Bloomington residents support a mix of policies and programs to address the short- and long-term impacts of climate change. The most popular proposals to address **heat** and **precipitation** challenges are:

Plant more trees on town streets to reduce impacts of flooding and heat waves **83%**

Adopt a text-based early warning system to reduce risks from heat waves **75%**

Provide vulnerable populations free health services during heat waves **73%**

68% **Replace some paved areas with water-absorbent landscape**

67% **Build stronger and higher flood walls where necessary**

52% **Construct new transportation routes to reduce the impact of flooding**

ABOUT THE HOOSIER LIFE SURVEY

Conducted between August and December 2019, the Hoosier Life Survey captures how Indiana residents perceive environmental changes, how residents are being affected in their homes and communities, how Hoosiers are preparing, and what they expect in the future. For more about the survey go to go.iu.edu/31Mf.

Looking for more results? Complete survey responses for the Bloomington metro area and other Indiana metro areas are available on the Hoosier Life Survey Metropolitan Report web page (go.iu.edu/3ayX).