



# EVANSVILLE, IN

## THE HOOSIER LIFE SURVEY METROPOLITAN REPORT

What do Evansville residents think about climate change, how are they preparing, and what resilience policies do they support? Results from the Hoosier Life Survey provide answers.

### BELIEFS

# 68%

believe climate change is happening.

# 22%

believe climate change is entirely or mostly caused by human activities.

# 12%

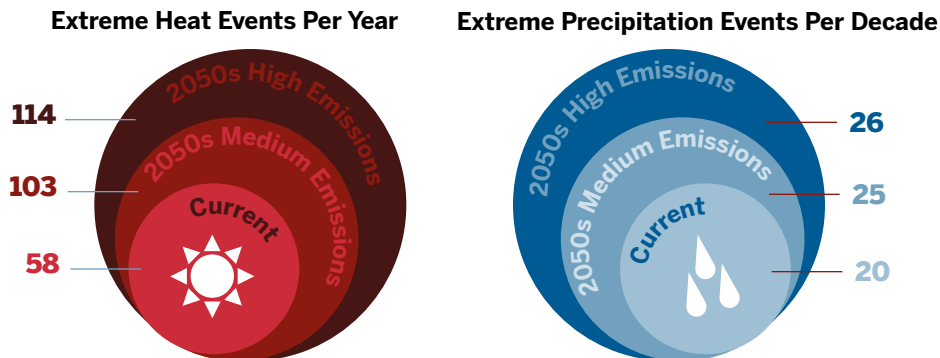
don't know if climate change is happening.

# 21%

don't know enough to say what scientists' perspective of climate change is.

### FUTURE IMPACTS

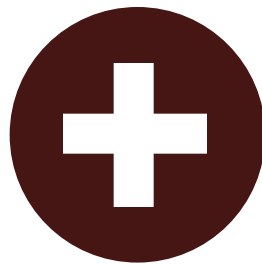
Climate change is projected to bring more high heat days, more extreme precipitation events, and increased flood risks to the Evansville metro area.



Source: Hoosier Resilience Index

### INFORMATION, TRUST, AND EXPERIENCE

Forty-seven percent know someone who has suffered health impacts from heat waves, such as dehydration or heat stroke, or have experienced it themselves.



Forty-two percent trust Indiana scientists "a lot" about how to prepare for climate change.



Thirty-five percent feel very informed about the risks of extreme weather.

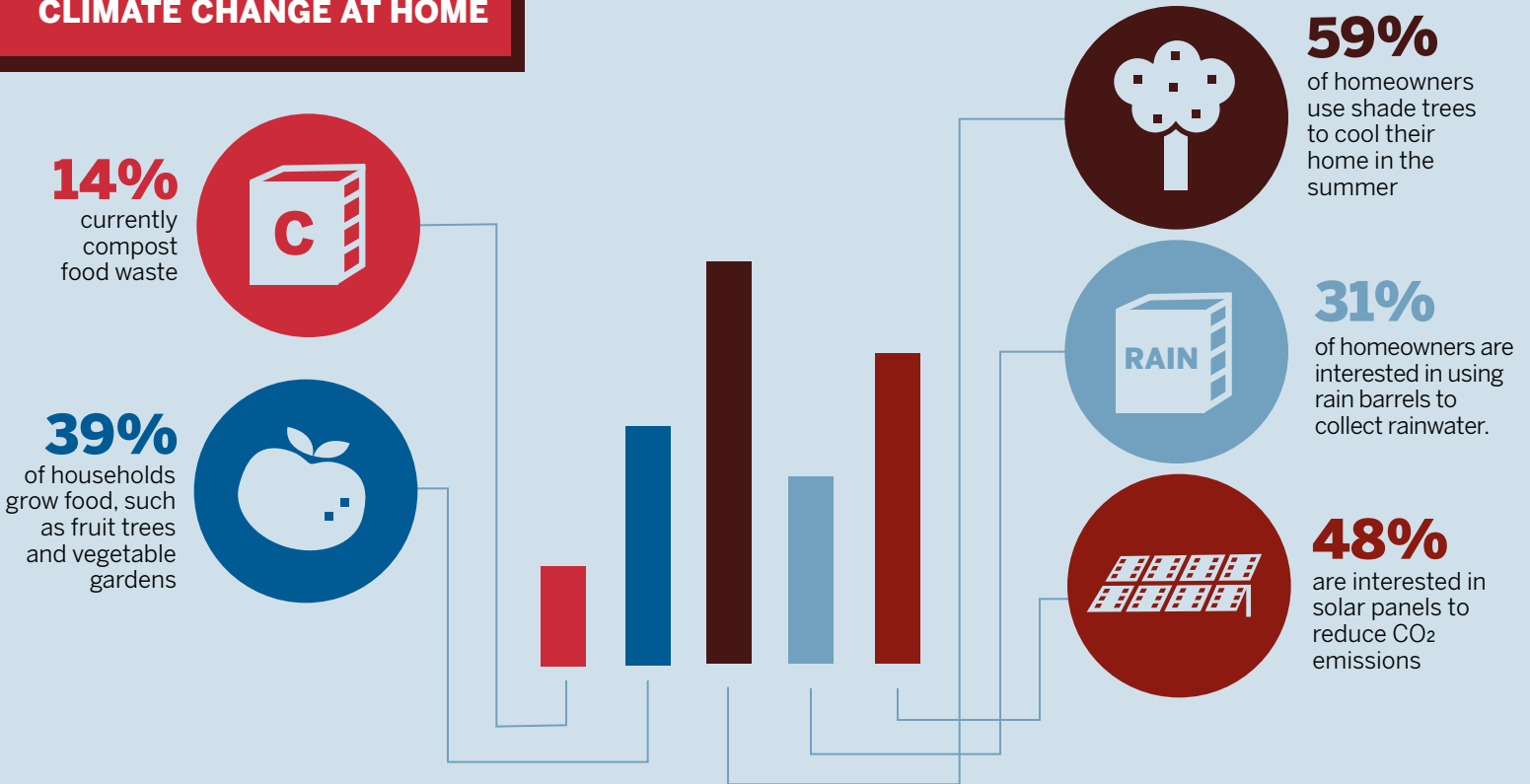


## Survey statistics

Average margin of error: 10.1 percentage points  
Confidence level: 95 percent

## THE HOOSIER LIFE SURVEY METROPOLITAN REPORT

### CLIMATE CHANGE AT HOME



### COMMUNITY POLICIES AND PROGRAMS

Evansville residents support a mix of policies and programs to address the short- and long-term impacts of climate change. The most popular proposals to address **heat** and **precipitation** challenges are:

**Plant more trees on town streets to reduce impacts of flooding and heat waves** **84%**

**Adopt a text-based early warning system to reduce risks from heat waves** **82%**

**Provide vulnerable populations free health services during heat waves** **70%**

**90%** **Build stronger and higher flood walls where necessary**

**75%** **Replace some paved areas with water-absorbent landscape**

**57%** **Construct new transportation routes to reduce the impact of flooding**

### ABOUT THE HOOSIER LIFE SURVEY

Conducted between August and December 2019, the Hoosier Life Survey captures how Indiana residents perceive environmental changes, how residents are being affected in their homes and communities, how Hoosiers are preparing, and what they expect in the future. For more about the survey go to [go.iu.edu/31Mf](https://go.iu.edu/31Mf).

Looking for more results? Complete survey responses for the Evansville metro area and other Indiana metro areas are available on the Hoosier Life Survey Metropolitan Report web page ([go.iu.edu/3ayX](https://go.iu.edu/3ayX)).