



What do South Bend-Mishawaka residents think about climate change, how are they preparing, and what resilience policies do they support? Results from the Hoosier Life Survey provide answers.

BELIEFS

63%

believe climate change is happening.

27%

believe climate change is entirely or mostly caused by human activities.

11%

don't know if climate change is happening.

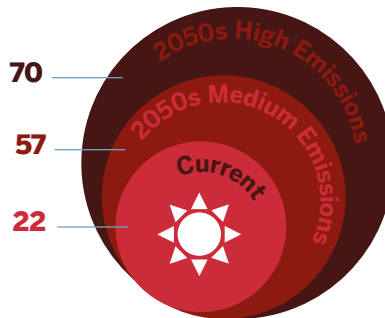
57%

believe most scientists think climate change is happening.

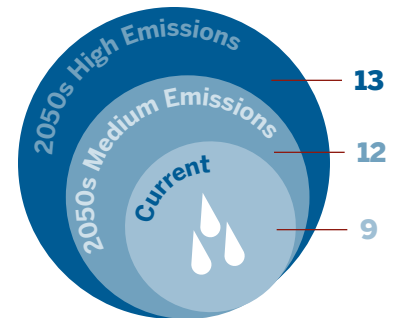
FUTURE IMPACTS

Climate change is projected to bring more high heat days, more extreme precipitation events, and increased flood risks to the South Bend-Mishawaka metro area.

Extreme Heat Events Per Year



Extreme Precipitation Events Per Decade



Source: Hoosier Resilience Index

INFORMATION, TRUST, AND EXPERIENCE

Fifty-six percent know someone who has suffered property damage from flooding or have experienced it themselves.



Thirty-seven percent trust family, friends, and neighbors "a lot" about how to prepare for climate change.



Twenty-five percent feel very informed about the risks of extreme weather.

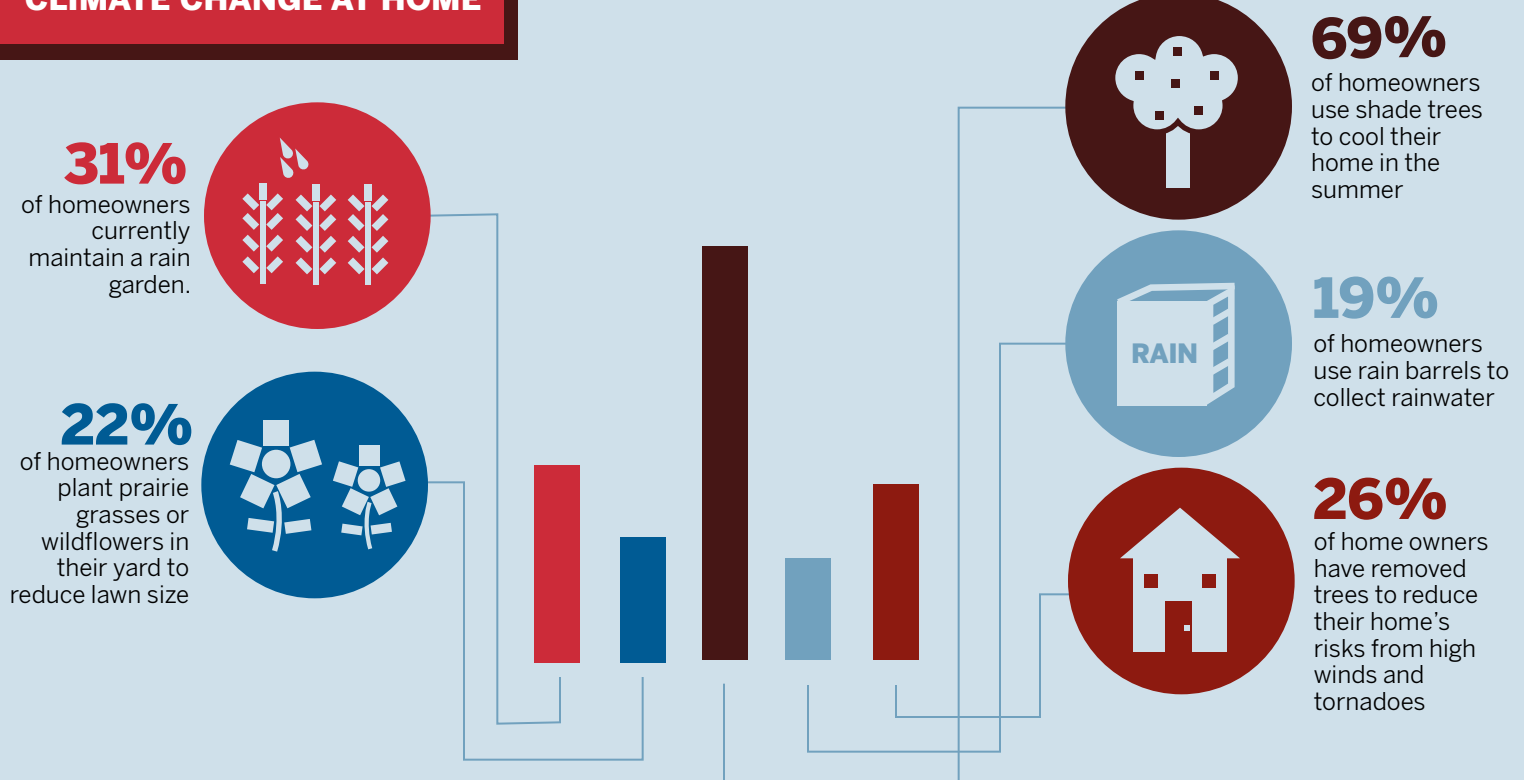


Survey statistics

Average margin of error: 8.6 percentage points
Confidence level: 95 percent

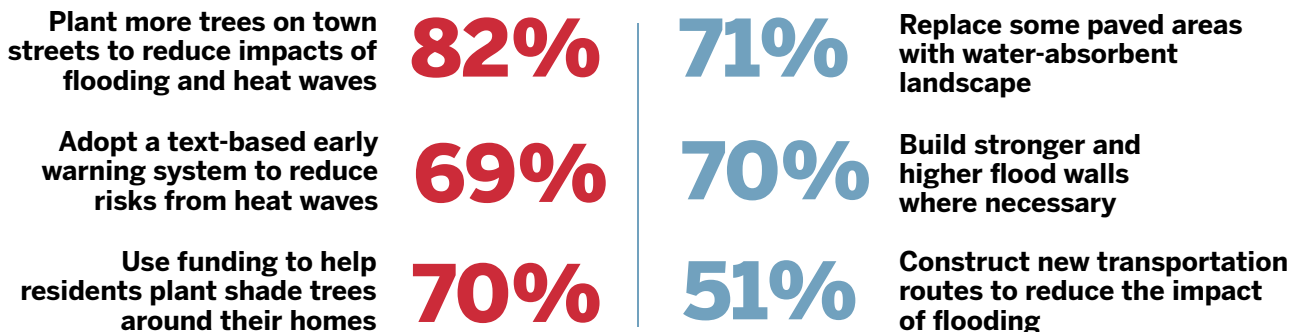
THE HOOSIER LIFE SURVEY METROPOLITAN REPORT

CLIMATE CHANGE AT HOME



COMMUNITY POLICIES AND PROGRAMS

South Bend-Mishawaka residents support a mix of policies and programs to address the short- and long-term impacts of climate change. The most popular proposals to address **heat** and **precipitation** challenges are:



ABOUT THE HOOSIER LIFE SURVEY

Conducted between August and December 2019, the Hoosier Life Survey captures how Indiana residents perceive environmental changes, how residents are being affected in their homes and communities, how Hoosiers are preparing, and what they expect in the future. For more about the survey go to go.iu.edu/31Mf.

Looking for more results? Complete survey responses for the South Bend-Mishawaka metro area and other Indiana metro areas are available on the Hoosier Life Survey Metropolitan Report web page (go.iu.edu/3ayX).